

FM Audit Installation Instructions

1. To create your account and install FM Audit, start by going to our website at <https://advancedimaging.fmwebaudit.com> and click on "Create account"

User Name (email)

Password

Login

[Forgot your password?](#)

[Create account](#)

2. Fill out the information on the account creation screen. When you're finished, click the Save button at the bottom.

End-user account creation

Organization name

Location Name

Street

Street Detail

City

State/Region

Zip

Country

Notes

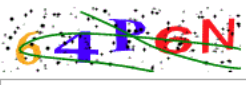
Contact Name

Phone

Email

Confirm Email

Notification Language



Verification Text

Save Reset

****If you encounter an error that says the account name is already in use, contact Michelle Roberts at 574-243-1096 or mroberts@advancedimaging.net. More than likely your account is already created and it may just need to be installed. Michelle can give you access to your account so you can install the software.**

End-user account creation

Organization name

This account name is already in use.

Location Name



3. Your account is now created. Check your email that you used to create the account. There will be an email with a link to install FM Audit Onsite as well as your password to log in.

noreply-central@fmaudit.com via gmail.com
to [redacted]

Welcome Michelle Roberts,

Your account has been successfully added to our system.

Next step...

To collect and submit your meters and consumable supplies, please proceed with one of the following options:

Click to install the Onsite application: [Onsite](#)

This process will install a .NET application onto your PC. The process will periodically discover your printers and will extract and submit the available meters and consumable supply levels.

Or...

Click to launch the WebAudit process: [WebAudit](#)

This process will load a temporary .NET control in your browser. The process will automatically discover your printers and will extract and submit the available meters.

You may access your account at anytime in the future by browsing to <https://advancedimaging.fmwebaudit.com/> and entering in your email and password provided below, or you may use the following quick login link, valid for the next 30 days. [Login](#)

Name: A Company
Contact: Michelle Roberts
Email/Login: [redacted]
Password: [redacted]

If you have any questions or require assistance, you may reply to this email and someone will contact you within the next 24 hours.

****PLEASE REMEMBER: This software is best used if it is installed on your server. If no server is available, it can be installed on a computer as long as the computer is running during normal business hours.**

4. Once you click on the link, you'll be taken to your account page in FM Audit. The first window that will appear will provide you with details of the latest updates.

Welcome to FMAudit Central 4.3!

Your FMAudit Central site has been updated to version 4.3, which focuses on adding to existing supply alert capabilities in order to facilitate more automated workflows and usage scenarios.

Some benefits of this update include:

- Alert on devices with limited reporting capabilities
- Proactive maintenance alerts based on printed volumes
- Additional supply replacement details to assist in understanding your MPS performance
- Flexible alert configuration for simpler setup and coverage of more scenarios

Primary enhancements include:

- Multiple Alert triggers
- Volume-based Alerts
- Supply Replacement Alerts
- Supply Replacement Report Enhancements
- API and ASM XML Additions


Click the "Next" button below to learn more!

Show tutorial on next login

Previous Next

After you click Next through the pages of information or click on the X at the top, the Download Onsite button will appear automatically. Click this button, but it's important to remember to save the installer, either to your downloads folder or to your desktop.

Download Onsite for A Company

 Download Onsite

Download and save the installer on your desktop
Right click the installer and select '**Run as Administrator**'

Windows System Requirements

PC with a 1GHz Intel or AMD processor and 512MB of RAM

Windows XP Service Pack 3 or later

Windows Vista, 7, 8, 8.1 or 10

Windows Server 2003,2008, 2008R2, 2012

.NET Version

Onsite: Version 2 or v2.0 compatibility enabled

400MB of available disk space

Internet Explorer 9 or higher

Broadband Internet connection to contact the Central Server

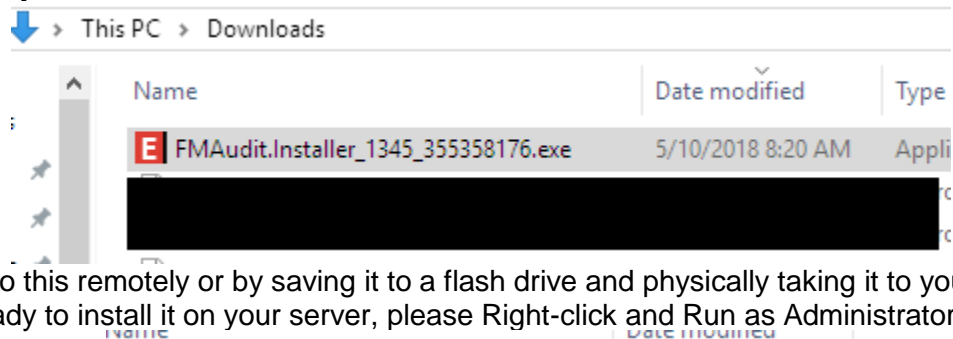


Contact us

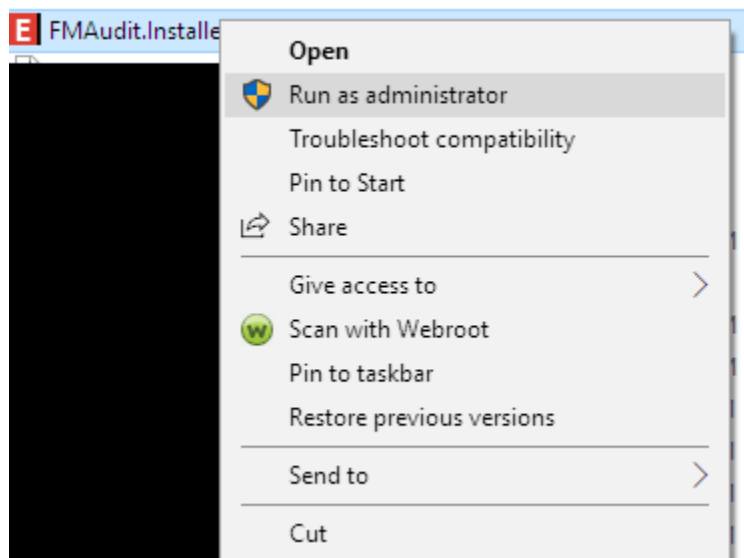
Have a question? Or an idea you'd like to share with us?

[Get in touch >](#)

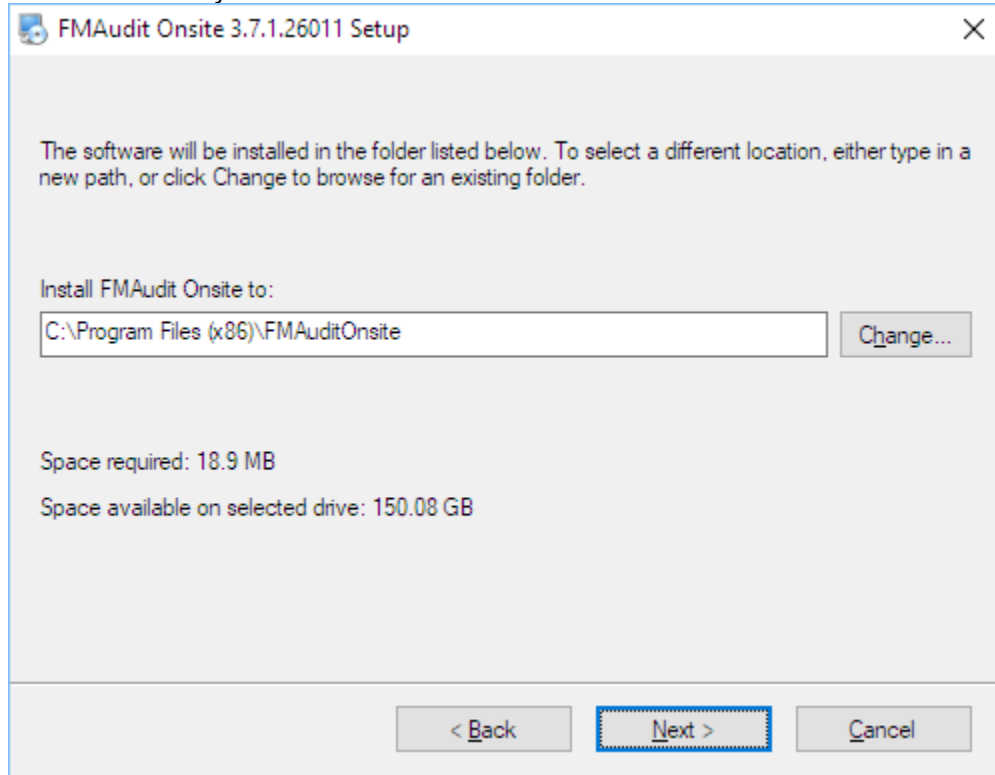
5. Once the download is complete, go to your Downloads Folder. You will need to take the file and transfer it to your server.



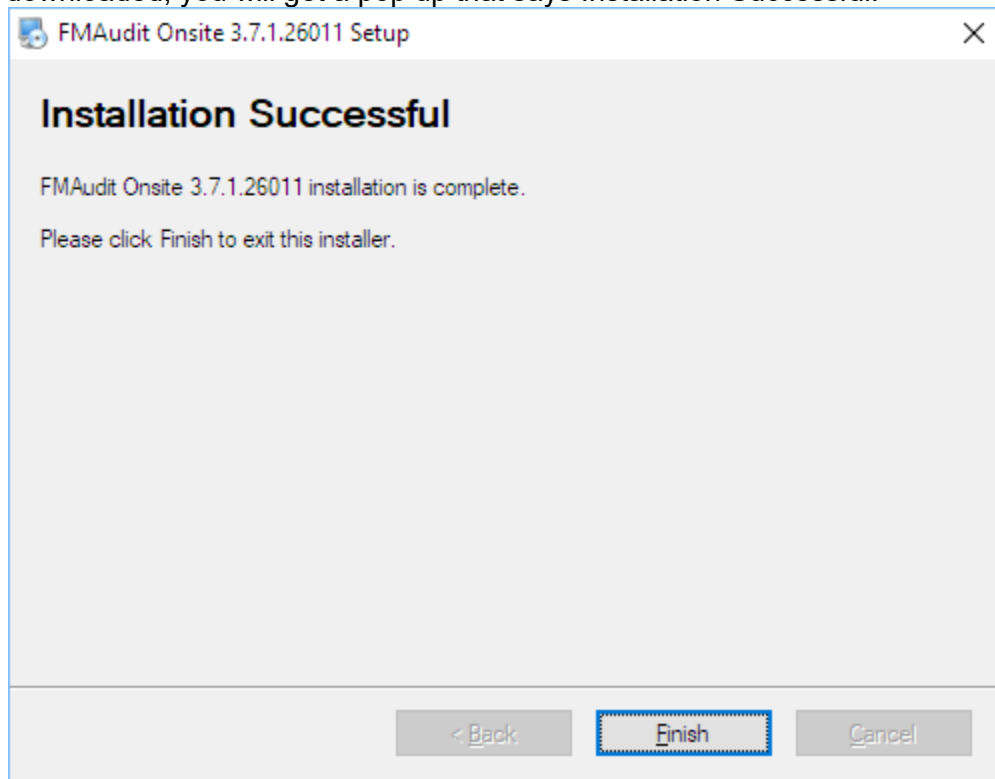
(You can do this remotely or by saving it to a flash drive and physically taking it to your server) When you are ready to install it on your server, please Right-click and Run as Administrator.



6. Choose a location where you would like to have the FM Audit software saved or allow it to default.



Once it's downloaded, you will get a pop up that says Installation Successful.



7. Once the software is installed, please email Michelle Roberts at mroberts@advancedimaging.net and let her know that you've installed the software. She will check to make sure that the software is reporting properly.