



Office Technology
Specialists



**Touchless Temperature Screening
Kiosk with Facial Recognition**



Non-contact kiosks automatically read body temperature in seconds, with optional facial recognition. These kiosks are designed to prevent virus spread and provide a safe environment for your employees, customers and visitors.

Screen all individuals before entry to public and private premises such as office buildings, factories, manufacturing plants, healthcare settings, shops, supermarkets, hotels, schools and universities.



- Non-contact, fully automated kiosk
- Reads temperature in ~ 1 second
- Set your own acceptable temperature thresholds
- Integrate with gates, turnstiles and door access
- On screen message displays temperature reading alongside optional verbal message and LED traffic light system
- Optional facial recognition to recognize and allow entry to vetted individuals within the facial database
- Plug and play solution – works standalone out of the box with only power required
- Access and export your logs to excel
- 1-year standard warranty

Accurate temperature detection

- Reads temperature in about 1 second
- Top of the range German manufactured temperature sensor
- Marginal measurement error of $\pm 0.2^{\circ}\text{C}$ (0.3 metres) from close range, and $\pm 0.5^{\circ}\text{C}/\pm 0.9^{\circ}\text{F}$ from further away
- The recommended distance for the most accurate readings is 1.5 feet, with 3 feet being the furthest distance where temperature can be read
- Temperature threshold for abnormal temperatures is easily adapted in the application settings

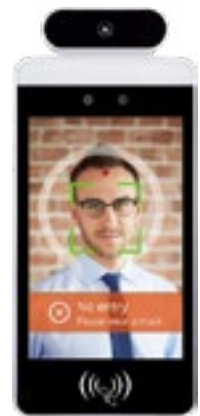


Durable, commercial-grade hardware

- 8-inch IPS full-view LCD display
- Commercial-grade, waterproof and dust-proof design which is durable and reliable
- Built-in speakers provide audio alerts including warnings for abnormal temperatures and to request that users wear a mask
- Supports various peripheral expansions such as ID card reader, fingerprint reader, two-dimensional code reader etc.

Smart facial recognition

- Industrial-grade binocular wide dynamic camera, night infrared and LED dual photo flood lamp
- Face recognition speed is ~ 1 second
- Database capacity for 30,000 faces
- Supports recognition and comparison of faces with masks
- The 1:1 comparison recognition rate is more than 99.7%, the 1:N comparison recognition rate is more than 96.7% at a 0.1% misrecognition rate, and the live detection accuracy rate is 98.3% at a 1% mis rejection rate



Mounting and Configuration

Mount the device onto an existing surface or select a desk stand, freestanding floor stand or wall mount.

Desk Mount



Free Standing Floor Mount



Surface Mount



Wall Mount



Turnstile Integration



Specifications

Model	Temperature Pass Management Module & Face Recognition Kiosk	
Camera	Resolution	2 million pixels
	Type	Binocular wide dynamic camera
	Aperture	F2.4
	Focusing distance	50-150cm
	White balance	Auto
	Photo flood light	LED and IR dual photo flood light
Screen	Size	8.0 inch IPS LCD screen
	Resolution	800 x 1280
	Touch	Not supported (optional upgrade)
Processor	CPU	RK3288 quad-core (optional upgrades - RK3399 six-core, MSM8953 eight-core)
	Storage	EMMC 8G
Interface	Network module	Ethernet and wireless (WIFI)
	Audio	2.5W/4R speakers
	USB	1 USB OTG, 1 USB HOST standard A port
	Serial communication	1 RS232 serial port
	Relay output	1 door open signal output
	Wiegand	One Wiegand 26/34 output, one Wiegand 26/34 input
	Upgrade button	Support Uboot upgrade button
	Wired network	1 RJ45 Ethernet socket
Function	Card reader	ID/IC card reader
	Face database library	Up to 30,000
	1:N face recognition	Support
	1:1 face comparison	Support
	Stranger detection	Support
	Identify distance configuration	Support
	UI interface configuration	Support
	Upgrade remotely	Support
	Interface	Interfaces include device management and settings configuration, personnel/photo management, access and export of logs.

	Deployment method	Support public cloud deployment, privatised deployment, LAN use, standalone use.
	Alerts feature (COMING SOON)	Email notifications with temperature readings.
Infrared Thermal Imaging Module	Temperature detection	Support – Optional feature which can be disabled if not required.
	Temperature detection distance	1 meter (optimal distance is 0.5 meter)
	Temperature error rate	± 0.5°C, ± 0.9°F
	Temperature measurement range	10°C ~ 42°C, 50 ~ 107.6°F
	Thermal field of view	32° x 32°
	Normal temperature confirmation	Support – Optional settings for verbal confirmation message and success light can be configured.
	Abnormal temperature alarm	Support – Temperature threshold can be configured as well as optional settings for verbal warning message and warning light.
General Parameters	Power	Input: 100-240V Output: 12V (±10%)
	Operating temperature	0°C ~ 60°C, 32°F ~ 140°F
	Storage temperature	-20°C ~ 60°C, -4°F ~ 140°F
	Power consumption	13.5W (max)
	Installation method	4 configurations available – surface, wall mount, desktop stand mount, freestanding pedestal mount
	Size	H260.18 x W132.88 x D25 (mm)
	Packing list	Kiosk terminal (1), power adapter for your region (1), mount of choice (1)
Warranty and Support	Warranty period	1-year standard warranty
	Warranty upgrade	Hot swap-out warranty for lifetime or fixed term
	Technical support	Support via live chat, email and phone available

Network Deployment

Monitor logs and facial database from a central backend on your network. You can pull reports based on areas and monitor, configure and control your devices from a central PC.

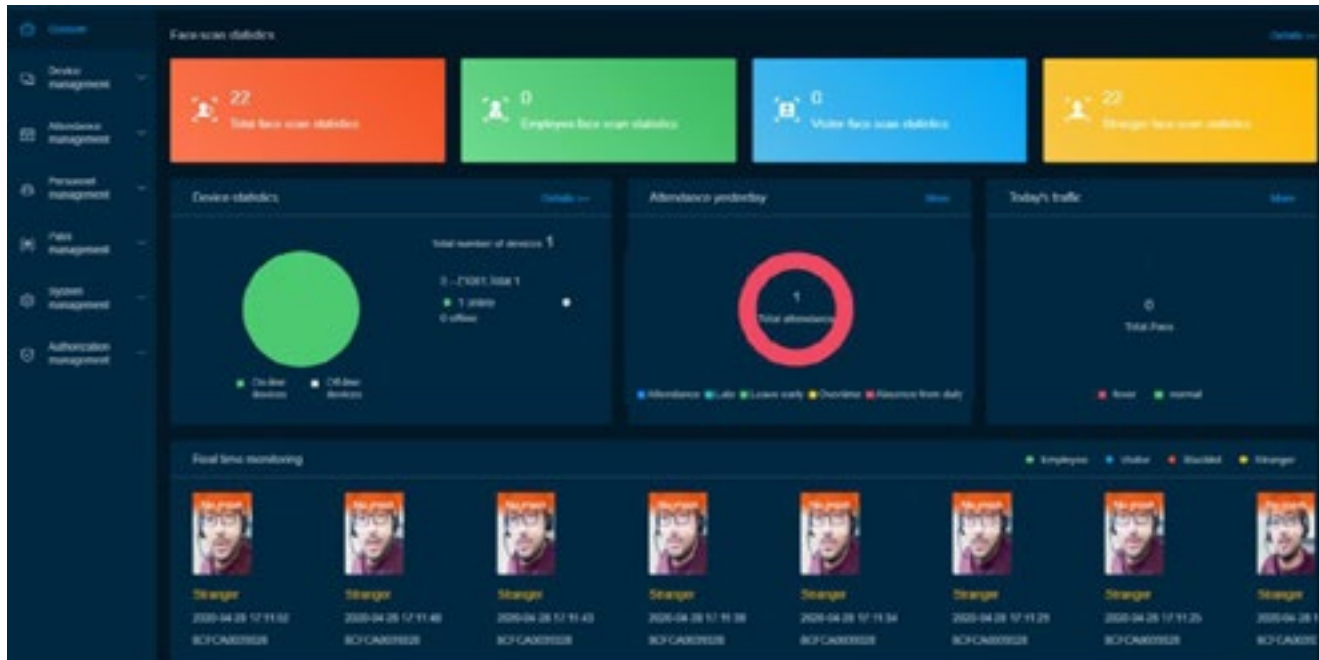


Table with columns: Face photo, Name, ID, Entry temperature, Face status, Device name, Access direction, and Creation time. The table contains three rows of scan records for 'Joe Bob'.

Face photo	Name	ID	Entry temperature	Face status	Device name	Access direction	Creation time
	Joe Bob	Employee	36.9°C	Entry temperature is normal	SCFCARD0028	Face recognition	2020-04-28 22:47:54
	Joe Bob	Employee	36.9°C	Entry temperature is normal	SCFCARD0028	Face recognition	2020-04-28 22:49:54
	Joe Bob	Employee	36.9°C	Entry temperature is normal	SCFCARD0028	Face recognition	2020-04-28 22:49:54

Table with columns: Device name, Access type, Entry status, Activation status, Version, IP Address, MAC Address, Access device group, and Operate. The table contains one row for device SCFCARD0028.

Device name	Access type	Entry status	Activation status	Version	IP Address	MAC Address	Access device group	Operate
SCFCARD0028	Enter the gate	Online	Activated	2.0.0	192.168.16.16	SCFCARD0028	Attendance group	

Wire Interface Definition



The interface of each terminal is defined as follows:

Relay	Terminal electrical definition
Pin 1	COM
Pin 1	NO

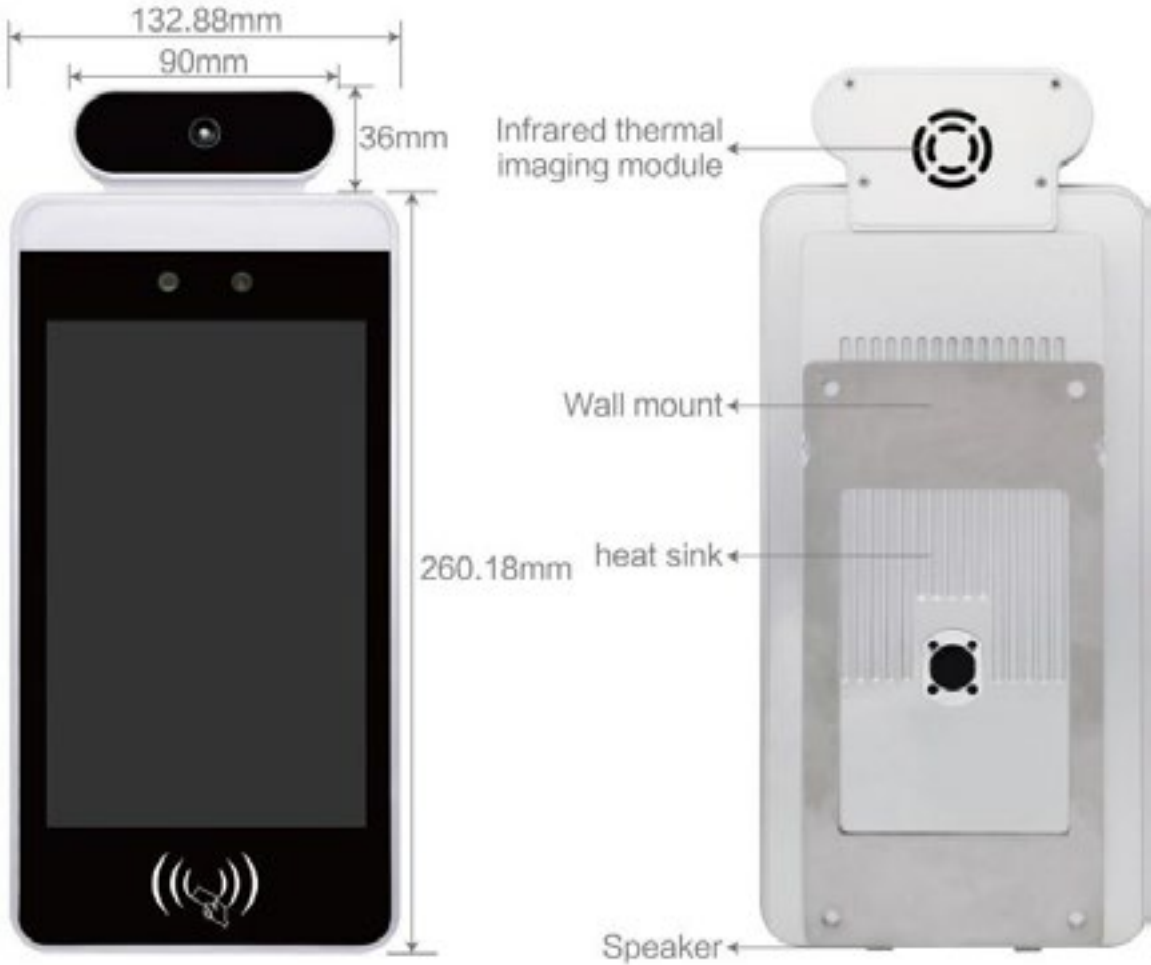
Wiegand Input	Terminal electrical definition
Pin1	D0_IN
Pin2	D1_IN
Pin3	12V
Pin4	GND

Wire Interface Definition

Wiegand Output	Terminal electrical definition
Pin1	D0_OUT
Pin2	D1_OUT
Pin3	GND

232 Serial Port	Terminal electrical definition
Pin1	232_RX1
Pin2	232_TX1
Pin3	GND





Contact us

advancedimaging.net
info@advancedimaging.net
(574) 243-1096

